

Vital Signs



MERCY COLLEGE
OF HEALTH SCIENCES

FALL 2004

A partner with Mercy Medical Center – Des Moines



>> COLDWEATHER
DOESN'T CHILL MOOD AT
GROUNDBREAKING
THREE YEARS OF PLANNING PAY OFF

FROM THE PRESIDENT



Dear Friends:

Over the summer Dr. John Nies started work as the College's first provost.

With his help, we'll focus

on the first two strategic goals. Goal One is to strengthen academic programs through the development of a comprehensive program improvement model that will ensure that existing programs incorporate health science educational "best practices" and develop new academic areas of study that address additional shortage areas in health care.

Goal Two is to enhance the delivery of student services by accommodating the needs and expectations of its students through ensuring that services are customer friendly and efficient. Dr. Nies has significant experiences in this field through his prior work as a consultant with Noel-Levitz.

During the October 6 Board of Directors meeting the College vision was officially approved. The College is now seeking "to be nationally recognized for excellence in the delivery and innovation of health sciences education as demonstrated by distinguished graduates who serve and lead in their communities."

By the time you read this column, the site of the new Patricia Clare Sullivan Center should be cleared and showing signs of significant progress. This issue of *VitalSigns* is filled with pictures of the long-awaited groundbreaking ceremony. After three years of planning, this project is finally coming to fulfillment.

As always, I am eager to hear your thoughts on these topics and any of the other issues facing health care education. You can reach me at (515) 643-6601 or by email at dremer@mercydesmoines.org.

Sincerely,

Dr. Deanne M. Remer
President

DIVISION OF LIBERAL ARTS AND SCIENCES

MERCY PROFESSOR AUTHORS BOOK ON CHRISTIAN ETHICS

Mercy College bioethics professor, Dr. Michael Allsopp, has written a book that will be published by University of Scranton Press in 2005. The book, *Renewing Christian Ethics: The Catholic Tradition*, is a culmination of 30 years of study and research into the foundations, shape, and style of Christian ethics. Though Allsopp has spent most of his career studying and teaching medical ethics, the book, he says, can be applied to many different fields. "The book is a study of what's been happening in Christian ethics, and because of my background, many of the references and examples are related to health care," he says. "After looking at the current state of Christian ethics—and the major efforts to renew the discipline—the book offers readers a theory that draws upon recent Catholic and Protestant authors, as well as the insights of 20th-century philosopher, W.D. Ross."

Allsopp joined the Mercy College faculty in fall 2003. His prior teaching experience includes 10 years at Creighton University as well as six years at Barry University in Florida. Most recently, Allsopp served as academic dean at Presentation College in South Dakota. A native Australian, Allsopp came to the United States in the 1970s to study. He holds two masters degrees from Gonzaga University, and a Ph.D. from Gregorian University-Rome.

"This is a tremendous time in the area of medical ethics," says Allsopp. "There are so many interesting issues." And while stem cell research, genetic engineering, and other emerging technologies are at the forefront of debate, Allsopp says that afford-



DR. MICHAEL ALLSOPP'S NEW BOOK WILL BE PUBLISHED IN 2005 BY THE UNIVERSITY OF SCRANTON PRESS.

able access to health care is the most widespread ethical issue—and the biggest challenge—in U.S. health care today. "What society should provide for its people is at issue. It raises the questions, is affordable health care a right, and if it is, how do we provide it?"

Allsopp will pose these and other contemporary ethics questions to his students this year at Mercy College, and will continue writing. His most recent work, an essay on moral decision making, reviews recent books and studies on the subject. +

COVER PHOTO: CHRIS GOSSLER, ASN '05, STUDENT SENATE PRESIDENT; VICKI CAMPBELL, BSN '00, NURSING ALUMNI ASSOCIATION PRESIDENT AND ELAINE BALL, MERCY AUXILIARY PRESIDENT, PARTICIPATED IN GROUND BREAKING FESTIVITIES.

STUDENT FOCUS

MISSION ACCOMPLISHED—ONE STUDENT'S VOLUNTEER EXPERIENCES TAKE HER TO ALASKA

By Lisa Baker

Mercy College student Joyce Mischel spent part of her summer vacation with a group of girls on a mission. The mission was to come to the aid of low income children in an impoverished area of Bethel, Alaska—thousands of miles away from the comforts of Des Moines, Iowa, where this group of Girl Scouts calls home.

Joyce is a troop leader, and has been ever since her daughter joined Girl Scouts in the second grade. Last fall her daughter left for college, but Joyce continued her volunteer work which included preparing seven Girl Scouts for the July 2004 service trip to Alaska. Joyce and two other leaders accompanied the seven girls to Bethel—a city 300 miles east of Anchorage along the western coast of Alaska where 25 percent of residents have no electricity and water is

a rare commodity, delivered mostly by truck. There they spent five days at a day camp for poor children, helping to entertain them with games, crafts and songs. They slept on the floor in a community center and were allowed only one shower during their five-day stay.

This was the second consecutive service trip to Alaska for Joyce. Her troop was scheduled to go to Africa in 2003, but two weeks before their departure the trip was cancelled when United States airlines discontinued flights into Kenya for security reasons. Joyce and the girls had been preparing for the African trip since 2001, but quickly regrouped and traveled instead to Alaska where they spent time helping out with children from low income families at the Boys and Girls Club of Anchorage.

Joyce's volunteer work with the Girl Scouts is personally fulfilling, but has an

added benefit—it also fulfills her community service requirement at Mercy College. As a second year student in the BSN program, Joyce is required to complete 20 hours of community service prior to graduation.

"Working with girls and helping them to become productive individuals fits in nicely with the mission of Mercy College and the purpose of community service hours," says Joyce. "Taking a project like this and making it work is a great experience."

Joyce intends to graduate in the spring from Mercy College with a BSN degree—but her community service work won't stop there. She is already planning a service trip next summer to Arizona to aid a group of Native Americans living in the base of the Grand Canyon. +

The mission was to come to the aid of low income children in an impoverished area of Bethel, Alaska—thousands of miles away from the comforts of Des Moines, Iowa.



JOYCE MISCHEL, FAR RIGHT, TAKES A MOMENT TO ENJOY THE GREAT ALASKAN OUTDOORS WITH THREE OF THE GIRL SCOUTS WHO ATTENDED THE MISSION TRIP TO ALASKA.

DISTINGUISHED ALUMNI RECOGNIZED AT JUNE BANQUET

Four women were honored by Mercy College and the Nursing Alumni Association at the June 5, 2004 banquet.

LINDA HITCHCOCK CAREY



Linda is a 1966 graduate of the Mercy School of Nursing. Following graduation, Linda became a nurse in Mercy Hospital's first Intensive Care Unit. She was then nursing supervisor in the Emergency Department where she managed a 50-member emergency team. While working in the ER, Linda designed and implemented a nursing audit system for emergency care that documented quality of care for emergency patients. She also designed a cost-effective supply distribution and charging system for the department. Other experiences at Mercy have included being a nurse manager of employee health, as well as nursing supervisor of Health and Human Services. She also worked as a catastrophic case manager on the HIV/AIDS Team for the Principal Financial Group. She was cofounder of Rehab Associates, where she provided medical case management within the Iowa Workers Compensation Disability system.

For the past 10 years, Linda has worked in the field of hospice care nursing, both for individuals in their homes and in hospice facilities. Linda has been working at Mercy Hospice-Johnston, since it opened in 2000 and she is a certified hospice and palliative care nurse.

Linda has been a mentor to many nurses in hospice nursing and sets a positive example for new employees by promoting teamwork on a daily basis. She is involved in her church as a Eucharistic minister and has been active in scouting, PTA, church choir, the AIDS coalition and has volunteered in various outreach programs for the poor. She has obtained certifications as an insurance rehabilitation specialist and rehabilitation case manager.

JO ANN GALEAZZI HUMPHREYS



Jo Ann is a 1968 graduate of the Mercy School of Nursing. Following graduation, Jo Ann has been employed by Mercy Hospital in either a nursing or nurse educator capacity. She has worked on the Intensive Care Unit at Mercy Hospital and was a staff nurse and nursing director and manager in

the emergency room at Mercy from 1971-1986. In 1986, Jo Ann became a nursing instructor at Mercy School of Nursing and continues today at Mercy College as an assistant professor of nursing in the Associate and Bachelor of Science in Nursing degree programs. She continued to work PRN in the Emergency Department of Mercy Medical Center from 1986-2003. Jo Ann also worked in the Health Education Department at Mercy Medical Center for three years and provided a number of programs for employees and the community.

Jo Ann has furthered her education in the field of nursing by receiving her BSN degree from Grand View College in Des Moines in 1980, and her MSN degree from Drake University in 1991. She is currently enrolled in courses at Drake University pursuing her Doctorate in Education degree.

Jo Ann is an active member of the Iowa Nurses Association, 5th District; Sigma Theta Tau International, Zeta Chi Chapter; the National League of Nurses and the Iowa League of Nurses. She is a past president of the Mercy College Nursing Alumni Association's Board of Directors, is a current member of the Board, and is a lifetime member of the alumni association. Jo Ann has also been an active member of many College committees and has been chairperson of the College Senate at Mercy College.

Since 1994, Jo Ann has been active in her community serving with the Sacred Heart Home and School Association, the Greenbriar Estates Women's Club, the Sacred Heart Church Women's Club, the West Des Moines Soccer Club and local blood donor drives.

PATRICIA WRIGHT JABLONSKI



Patricia is a 1964 graduate of the Mercy School of Nursing. After serving as senior class president for the class of 1964, Patricia worked for Mercy Hospital for eight months. From 1965-67 she was a staff RN on the Chest, Maxillary-Facial and Orthopedic Unit at Veterans Administration Hospital in Omaha, Nebraska and in 1967 received her Rehabilitation Certification from Texan Women's University in Houston, Texas. Patricia then became the Admission/Dismissal Coordinator and Rehabilitation Nurse for Nebraska Methodist Eppley, a complex extended care facility for Nebraska Methodist Hospital, from 1967-1983. Patricia also worked for Career Design, Inc. in Omaha as a case management nurse working with Nebraska Workers Compensation cases, and for

Nurse Incorporated in Conway, Arkansas as a home health nurse from 1988-1989. Since 1989 she has been a certified occupational hearing conservationist.

Patricia ended her full-time nursing career at Kimberly-Clark Corporation, Personal Care Facility, in Conway, Arkansas. From 1989-2002 she was the Occupational Health Nurse serving 550-700 employees, and is currently on contract status doing part-time work for the facility. While employed at Kimberly-Clark, Patricia received her Case Management Certification from The Certification of Insurance Rehabilitation Specialists Commission in 1993, and received certification by The American Board for Occupational Health Nurses, Inc. in 1996.

In her community, Patricia has served in a leadership role for many of the organizations she has been involved with, including past president of the PTA for Westside

Middle and High Schools, past board member of Bethlehem House, a homeless shelter in Conway, past board member of the United Way of Faulkner County in Arkansas, past board member of Faulkner County Day School, a facility teaching physically and mentally challenged individuals, past advisory board member for the Conway Regional Women's Center and cochairman for the selection committee in 2002 for Habitat for Humanity of Faulkner County. In 1997 she graduated from The Faulkner County Leadership Institute and also served on a medical mission team to Honduras. Patricia has also been a committee member and volunteer for Faulkner County Stop Domestic Violence, the American Heart Association, and the American Cancer Society. She is also a Eucharistic minister, a member of the Perpetual Adoration group, and serves on the Ministry of Consolation Team at St. Joseph's Catholic Church

in Conway. Additionally, she is a Delta Zeta Sorority member and a current member of the Mercy College Nursing Alumni Association.

ANNE LANE ROUSH



Anne Roush is a 1951 graduate of the Mercy School of Nursing and retired in 1990 after an outstanding career as a mental health nurse and social worker.

Following graduation, Anne entered Saint Louis University in Saint Louis, Missouri, and completed her Bachelor of Science in Nursing degree, which she received in 1963.

From 1951-1956 Anne was a staff nurse at Saint Louis University Hospital, a head

CONTINUED PAGE 15

REGIONAL ALUMNI GATHERINGS PLANNED

Alumni of Mercy College live in all areas of the United States. From Hawaii to Maine, the College has over 950 graduates who live outside of the state of Iowa.

In February 2004, the Office of Institutional Advancement hosted its first-ever off-campus event in an effort to connect with our out-of-state alumni. Eleven graduates and their guests from the state of Arizona gathered for lunch in the Scottsdale area and were not only able to meet other alums who live in their state, but were also able to learn more about Mercy College and events taking place on campus. We plan to return

to Arizona again this winter, and we are also planning to visit seven other cities across the U. S. where we have a high concentration of graduates. The dates and places of our other off-campus events are shown at right.

Further details regarding the event specific to each city and state will be mailed one month in advance of the event. If you happen to be visiting one of these areas at the time of the event, or if you know someone who would like to receive an invitation, please contact Mary Jankowski by e-mail at mjankowski@mercydesmoines.org or by phone at (515) 643-6638 and she will mail information to you.

Mark your calendars! We look forward to seeing many of you as we venture to your area of the country. +

January 25, 2005	Scottsdale, AR
January 26, 2005	Laguna Cliffs, CA
January 27, 2005	San Francisco, CA
February 8, 2005	Houston, TX
February 9, 2005	Dallas, TX
February 15, 2005	Florida (city yet to be determined)
April 19, 2005	Denver, CO
June 9, 2005	Washington, D.C.

ENDOWED SCHOLARSHIP EFFORTS CONTINUE TO GROW BALANCES AND HELP MORE STUDENTS

Many alumni of Mercy College have given generously in recent years to several of the endowed scholarships at the College. An endowed scholarship is one in which a principal amount is contributed and held in perpetuity to support the purposes of the scholarship. Only a portion of the interest and earnings are spent each year for scholarship assistance.

Mercy College has established three endowed scholarships in recent years: the Sr. Zita, Sr. Sebastian and the Leona Sweeney Endowed Scholarships. These three women hold a special place in the hearts of many of our graduates, and they individually and collectively have established a memorable legacy for the College. As a way to honor them, endowed scholarships were begun in each of their names, and we

appreciate your continued support of these funds. Many students are able to follow in the footsteps of these great women because of your willingness to give.

The balances in each of the scholarship funds are as follows:

SR. ZITA ENDOWED SCHOLARSHIP FUND\$31,962

SR. SEBASTIAN ENDOWED SCHOLARSHIP FUND\$44,252

LEONA SWEENEY ENDOWED SCHOLARSHIP FUND\$24,717

In April of this year, another outstanding Mercy College educator was honored as she retired from the College after 40 years of dedication and service. A classroom in the Patricia Clare Sullivan Center will be named in honor of Suzanne Mains, Class of 1964. Suzanne was a devoted instructor, director, employee and supporter

of Mercy College and her classmates, friends, College employees and others have honored her by donating \$54,497 toward the dedication of the room in her name. Efforts to increase the principle balance of each of these three endowed scholarships will continue. A goal to achieve a \$100,000 balance in all three will continue for the next few years. +



SISTER ZITA



SISTER SEBASTIAN



LEONA SWEENEY



SUZANNE MAINS

DONOR CONTRIBUTIONS FUEL SCHOLARSHIP AWARDS FOR FY2004-05

Mercy College scholarship committees awarded more than \$109,000 in scholarships to students based on criteria that included academic ability, financial need and volunteer service and student leadership for the fall semester. The Mercy Auxiliary has doubled its scholarship commitment for the academic year to \$80,000.

Scholarship winners and the committees that selected them include:

MERCY COLLEGE NURSING ALUMNI ASSOCIATION SCHOLARSHIP COMMITTEE

Ehlers, Holly \$300
Nursing Alumni Association General Scholarship

Ehlers, Holly \$200
Sr. Mary Sebastian Geneser Scholarship

MERCY AUXILIARY NURSING SCHOLARSHIP COMMITTEE

All scholarships are General Scholarship unless noted

Acheampong, Sylvia \$400

Agan, Joni	\$700
Baker, Jessie	\$400
Bauer, Danica	\$500
Baxter, Heather	\$400
Beane, Elizabeth	\$400
Beitz, Katina	\$500
Binns, Heather	\$500
Binns, Melisha	\$500
Birkel, Pat	\$700
Boeckholt, Brooke	\$400
Chalfant, Cynthia	\$500
Cooper, Wendy	\$500
DeGoey, Jillana	\$500
Dobbie, Elizabeth	\$700

Engelking, Courtney	\$700
Ethell, Holly	\$600
Foresman, Macy	\$600
Foltz, Cassie	\$400
Friest, Erin	\$600
Fuller, Rachel	\$600
Graber, Alicia	\$500
Green, Elyse	\$400
Griffin, Toni	\$600
Harmeyer, Michelle	\$1000
Hatfield, David	\$400
Hayes, Latersha	\$400
Heideman-Crees	\$600
Hooper, Amanda	\$500
Hopkins, Stacey	\$600
Jack, Jennifer	\$700
Jackson, Shawna	\$500
Jennings, Libby	\$400
Johnson, Jacqueline	\$700
Johnson, Megan	\$500
Keenan, Jamie	\$400
Kenton, Melissa	\$400
Kimbrough, Jacquelyn	\$400
Knape, Jama	\$400
Ladjahasan, Karen	\$500
LaGarce, Donna	\$500
Lange, Crystal	\$400
Larson, Amanda	\$600
Lee, Diana	\$600
Lehman, Brittni	\$600
Loomis, Courtney	\$800
Lytton, Judy	\$800
Magrum, Amanda	\$800
Malcolm, Melinda	\$800
McAdoo, Violet	\$600
McCaughy, Alisha	\$450
<i>Sr. Mary Gervase Scholarship</i>	

Mefferd, Michelle	\$600
Miller, Michelle	\$700
Muenzenberger, Christine	\$600
Northway, Sherry	\$500
Nowicki, Karin	\$500
Ofenbakh, Mark	\$500
Olson, Curtis	\$950
<i>Morris and Lenore Mandelbaum Scholarship</i>	
Overton, Melissa	\$700
Oye, Tashiana	\$500
Parker, Amanda	\$500
Peters, Ashley	\$500
Phipps, Nichole	\$600
Pierce, Jody	\$800
Pierson, Aaron	\$500
Powers, Jessica	\$400
Prichard, Sara	\$500
Rafter, Megan	\$800
Ramsey, John	\$500
Raske, Beth	\$600
Reed, Melanie	\$600
Reid, Angela	\$600
Reyes, Angela	\$500
Rinehart, Danielle	\$500
Rollins, Jody	\$400
Shawver, Megan	\$500
Sinnwell, Emily	\$500
Skaggs, Wendy	\$500
Spaid, Malori	\$500
Spooner, Morgan	\$600
Stone, Deanna	\$500
Summy, Amy	\$700
Tabor, Erin	\$600
Thomas, Jami	\$500
Thomas, Sandra	\$900
Thompson, Connie	\$500

Thompson, Julie	\$500
Timmons, Ann	\$500
Todd, Jodi	\$500
Tomlinson, Kathryn	\$700
Toms, George	\$300
Van Zee, Brynna	\$500
Wagner, Denise	\$700
Wilkinson, Jennifer	\$600
Wille, Sarah Jean	\$500
Wolf, Mary	\$500
<i>Mary Northup Scholarship</i>	
Woolery, Tanya	\$600
Woodyard, Bonnie	\$600
Zaugg, Penny	\$600
Zeman, Tara	\$600

DIVISION OF ALLIED HEALTH SCHOLARSHIP COMMITTEE

Anderson, Jessica	\$1,000
<i>Allied Health First Year Scholarship</i>	
Anderson, Nicole	\$800
<i>Iowa Orthopaedic Radiologic Technology Scholarship Fund</i>	
Kelly, Brian	\$2,000
<i>William and Marcia Young (Second Year) Endowed Scholarship</i>	
Metzger, Angela	\$2,000
<i>William and Marcia Young (First Year) Endowed Scholarship</i>	
Pick, Katie	\$800
<i>Iowa Orthopaedic Radiologic Technology Scholarship Fund</i>	
Primelles, Alina	\$700
<i>Chrysalis Foundation Hispanic Student Scholarship Fund</i>	
Schrage, Julie	\$966
<i>Iowa Heart Center PC Scholarship</i>	
Schrage, Julie	\$1,000
<i>Allied Health Clinical Scholarships</i>	

DIVISION OF NURSING SCHOLARSHIP COMMITTEE

Blazicek, Joye	\$500
<i>Beatrice Bender Endowed Scholarship</i>	
Blazicek, Joye	\$500
<i>Mercy Medical Staff Endowment Fund Scholarship</i>	
Brinkerhoff, Kary	\$250
<i>Helen Ann Maloney Scholarship Fund</i>	
Brinkerhoff, Kary	\$750
<i>Joann Coppola Randa Memorial Endowed Scholarship Fund</i>	
Brown, Francine	\$500
<i>Beatrice Bender Endowed Scholarship</i>	
Chalfant, Cynthia	\$500
<i>Mercy Medical Staff Endowment Fund Scholarship</i>	
Chalfant, Cynthia	\$500
<i>Beatrice Bender Endowed Scholarship</i>	
Ehlers, Holly	\$1,000
<i>Student Leadership/Community Service Scholarship Award</i>	
Feddersen, Alison	\$899
<i>Carl and Mary Cacciatore Memorial Endowed Scholarship Fund</i>	
Fuller, Rachel	\$500
<i>Mercy Medical Staff Endowment Fund Scholarship</i>	
Hillmann, Amber	\$1,000
<i>Beatrice Bender Endowed Scholarship</i>	
Penner, Melissa	\$1,000
<i>Bachelor of Science in Nursing Scholarship Fund</i>	
Rezek, Elizabeth	\$1,100
<i>Claude E. Niemier Perpetual Trust Nursing Scholarships</i>	
Skaggs, Tonya	\$3,500
<i>Dr. E.T. Scales Endowed Scholarship</i>	
Sinnwell, Emily	\$700
<i>Chrysalis Foundation Hispanic Student Scholarship Fund</i>	

DIVISION OF ALLIED HEALTH — CERTIFICATE PROGRAM AWARDS

Daughenbaugh, Colleen	\$550
<i>Certificate Program Scholarship</i>	
Duke, Yolanda	\$550
<i>Certificate Program Scholarship</i>	
Jordan, L.C.	\$550
<i>Certificate Program Scholarship</i>	
Yeazel, Anna Marie	\$550
<i>Certificate Program Scholarship</i>	

ACADEMIC SCHOLARSHIPS

DIVISION OF ALLIED HEALTH ACADEMIC SCHOLARS

Crandall, Iryna, DMS Program	\$1834
<i>Transfer Academic Scholarship</i>	
Crim, Marcia, DMS Program	\$1834
<i>Transfer Academic Scholarship</i>	
Crook, Rebecca, HCM Program	\$1,668
<i>Freshman Academic Scholarship</i>	
Cummings, Crystal, RT Program	\$1,668
<i>Freshman Academic Scholarship</i>	
Jones, Cassandra, DMS Program	\$1,000
<i>Transfer Academic Scholarship</i>	
McLaughlin, Allyson, NM Program	\$1,834
<i>Transfer Academic Scholarship</i>	
Metzger, Angela, RT Program	\$1,500
<i>Transfer Academic Scholarship</i>	
Oswald, Elicia, RT Program	\$1,668
<i>Freshman Academic Scholarship</i>	

DIVISION OF NURSING ACADEMIC SCHOLARS

Ethell, Holly	\$1,500
<i>Transfer Academic Scholarship</i>	
Jennings, Elizabeth	\$1,168
<i>Transfer Academic Scholarship</i>	
Kriz, Casie	\$1,668
<i>Freshman Academic Scholarship</i>	
Larson, Amanda	\$2,000
<i>Freshman Academic Scholarship</i>	
Reams, Katie	\$1,668
<i>Freshman Academic Scholarship</i>	
Reid, Angela	\$1,334
<i>Freshman Academic Scholarship</i>	
Rygg, Stephanie	\$1,168
<i>Transfer Academic Scholarship</i>	
Scott, Sara	\$1,000
<i>Transfer Academic Scholarship</i>	
Slegh, Kelly	\$2,000
<i>Freshman Academic Scholarship</i>	
Stone, Deanna	\$1,334
<i>Transfer Academic Scholarship</i>	
Zaugg, Penny	\$2,334
<i>Freshman Academic Scholarship</i>	

HOW TO HELP YOUR ATTORNEY, AND YOURSELF

By Sandi Tuttle, CFRE
Vice President and Director of Planned Gifts, Mercy Foundation



Before meeting with your attorney about your estate plan, you can do some things to save time and money. Here are four tips:

1. PREPARE AN INVENTORY OF YOUR ESTATE.

Since your estate plan will essentially direct the transfer of your assets at death, you should compile a list of all your holdings and obligations. What do you own? How much is it worth? Where is it located? How are the various assets owned (jointly, separately, etc)? List any memberships (country club, time-shares, etc.). What are the beneficiary designations on your bank, brokerage and retirement accounts and your insurance policies? How much do you owe and to whom?

This will take some time and force you to get all your records in order. But the process will be instructive for you and time-saving when your attorney begins to quiz you about these things. It's easy to overlook some assets, so be as thorough as possible.

2. SELECT KEY PEOPLE YOU WANT TO INVOLVE.

Who do you want to oversee the probating of your estate (your personal representative)? Who do you want to serve as the trustee of any trusts created by your will? Who do you want to be the guardians of any minor children you might have? And don't forget about your power-of-attorney and health care documents.

You will need not only primary names, but also back-up names in case your first

choices are unable or unwilling to serve. If possible, have two additional names for each position.

Having all of this taken care of before visiting your attorney will make things much easier and time-efficient.

3. DECIDE WHAT TO GIVE FAMILY MEMBERS.

This can be one of the most difficult parts of the whole process. Indeed, some people endlessly delay getting a will because this step is either too perplexing or painful.

There are many issues to consider. Too much inheritance may stifle personal initiative and feelings of self-worth. One child may be careless with money, another disciplined. One may have physical needs requiring extra assistance. One may be self-sufficient, another financially strapped. How much is too much? How little is too little?

You might want to discuss this subject with a trusted friend or personal advisor.

And remember, with a will you can always change your mind later. The important thing is to at least get a plan in place for now.

4. DETERMINE YOUR CHARITABLE BEQUESTS.

Which organization(s) do you want to support with your gifts from your estate? Of course, we at Mercy College hope you will include us in your plans. Your estate gift will make a difference and help us continue our educational mission into the future.

A charitable giving component to your estate plan can have significant meaning to your survivors and communicate your values in a powerful way. It can also help you establish a legacy that will outlive your children and grandchildren.

I would be happy to visit with you about your estate plans in preparation for your visit with your attorney. You can reach me by phone at (515) 643-8033 or via e-mail at stuttle@mercydesmoines.org.



>> COLD WEATHER DOESN'T CHILL MOOD AT GROUNDBREAKING

THREE YEARS OF PLANNING PAY OFF

With temperatures hovering at 50 degrees, nearly 250 people gathered outside Building 2 on the campus of Mercy College on October 15, 2004 to celebrate groundbreaking for the Patricia Clare Sullivan Center, the latest planned addition to the campus.

Joining the celebration were United States Senator Tom Harkin; Provost John Nies, Ph.D.; President and CEO of Mercy Medical Center Dave Vellinga; Mercy Auxiliary President Elaine Ball; and College Student Senate President Christopher Gossler. A video message was presented from Patricia Clare Sullivan.

Special guests at the ceremony included eight Sisters of Mercy living in the Des Moines area, members of the College Board, students, alumni and staff of Mercy Medical Center, and representatives of the numerous subcontractors.

The Sullivan Center is a \$5.6 million educational building that has been designed to address continuing demand from prospective students eager to enter numerous health care fields. The 38,000-square-foot building honors Patricia Clare for her quarter century of service to health care in

central Iowa and the important roles she has played in nursing and allied health education throughout her career.

Sullivan was director of the Mercy School of Nursing, predecessor to Mercy College, from 1960 to 1964. She returned to Des Moines in 1976 to become president and chief executive officer of Mercy Hospital Medical Center, until 1993. Sullivan was inducted into the Iowa Women's Hall of Fame for her lifetime contribution to health care in Iowa.

Construction of the new facility is the first of two phases of expansion to address the need for additional classroom and specialized health science educational skills laboratories. Mercy College student enrollment has climbed by 141% since 1997. This fall official enrollment hit 659 full- and part-time students in eight bachelor and associate degree fields.

Funding for the new facility includes federal grants of \$4.4 million provided with the assistance of U.S. Senator Tom Harkin. In addition, Mercy Medical Center – Des Moines has committed \$400,000 to the project as part of the medical center's Mercy Momentum campaign. An additional \$1.17 million has been raised from individuals, businesses and organizations to

cover the cost of equipment needed throughout the building.

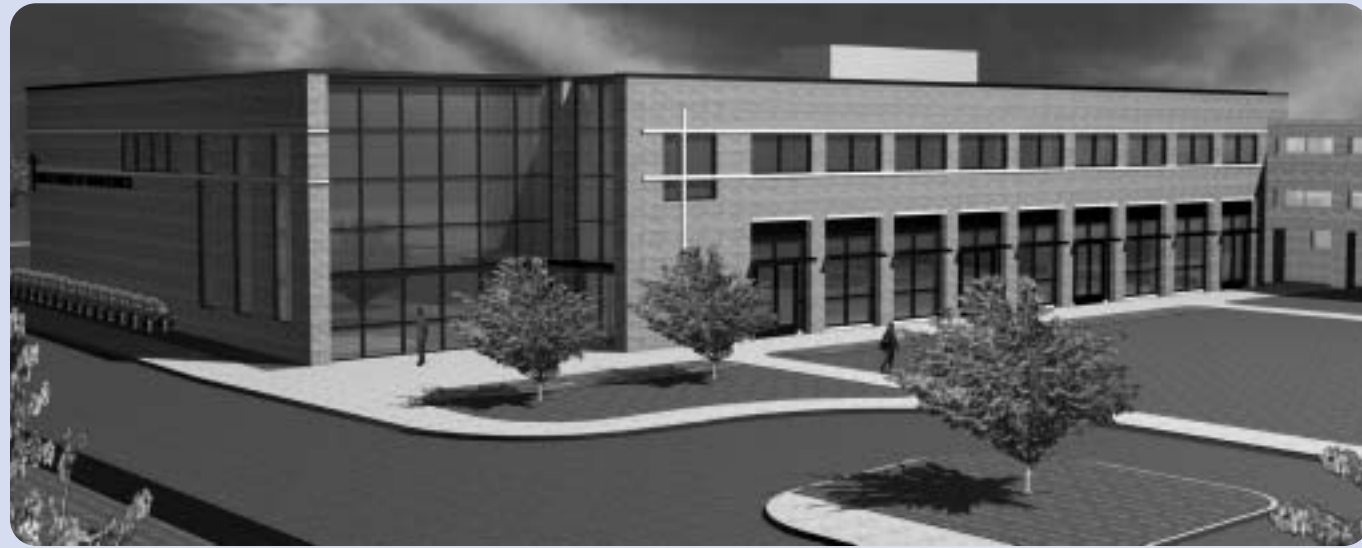
The new facility will house the College's library named in honor of the Mercy Auxiliary of Central Iowa, three classrooms with distance education technology including the Suzanne Mains Classroom, the Wellmark Blue Cross and Blue Shield Lecture Hall named in honor of the company's leadership contribution to the project, three science laboratories, a computer classroom, and a 16-bed nursing arts laboratory.

Construction began on Monday, October 11 with the demolition of a stairwell on Building 1. Work on the building is scheduled for completion in September 2005 with occupancy in October of next year. Classes will be scheduled in the new building in spring 2006.

A reception attended by several hundred guests followed the ceremony in Brennan Hall. Coincidentally, Patricia Clare spearheaded the construction of Brennan Hall, the last new structure built on campus, just before her term as CEO ended in 1993.

PATRICIA CLARE SULLIVAN

FACTS ABOUT THE SULLIVAN CENTER



BUILDING SIZE: 38,216 square feet, 2-story structure

CONSTRUCTION COST: \$4.8 million

EQUIPMENT COST: \$1.0 million+

FUNDING SOURCES:

\$ 4,428,364 Health Resources & Services Administration (HRSA),
U.S. Department of Health & Human Services

\$ 400,000 Mercy Medical Center – Des Moines

\$ 1,000,000+ Charitable Contributions from Private Donors

START DATE: October 11, 2004

COMPLETION DATE: Fall 2005

CONSTRUCTION TEAM:

Architects: Brooks Borg Skiles Architecture Engineering, LLP

Construction Manager: Ball Construction Services, LLC

Mechanical Contractor: Stroh Corporation

Electrical Contractor: ABC Electric

SPECIAL BUILDING FEATURES:

>> Mercy College Library honoring the Mercy Auxiliary of Central Iowa (6,600-square-feet)

>> Wellmark Blue Cross and Blue Shield of Iowa Lecture Hall (96-seat capacity)

>> Suzanne Mains ICN Classroom and two (2) additional ICN classrooms (seating 30-54)

>> Three (3) health science laboratories (anatomy, microbiology, physiology)

>> 16-bed Nursing Arts Laboratory (NAL) with an 8-workstation multimedia NAL computer laboratory

>> 25-workstation computer classroom



DIGNITARIES CELEBRATING GROUND BREAKING INCLUDE CHRIS GOSSLER, STUDENT SENATE PRESIDENT; DALE VELLINGA, PRESIDENT AND CEO OF MERCY MEDICAL CENTER; TOM HARKIN, U.S. SENATOR; DR. JOHN NIES, PROVOST; AND ELAINE BALL, PRESIDENT OF THE MERCY AUXILIARY OF CENTRAL IOWA.



THROUGHOUT HISTORY OF THE SISTERS OF MERCY IN DES MOINES, THE SISTERS HAVE WILLINGLY PARTICIPATED IN CONSTRUCTION GROUND BREAKING CEREMONIES. IN THIS PICTURE, BRIAN TINGLEFF, VICE PRESIDENT OF INSTITUTIONAL ADVANCEMENT, JOINS SISTERS RITA, BEATRICE, MARY ELLEN, JOSETTE, MARTINA AND KAREN ALONG WITH WORKERS FROM METRO WREAKING AND EXCAVATING, INC. ON A PIECE OF LIFT EQUIPMENT.

HARKIN TARGETS THREE APPROPRIATIONS FOR PROJECT

United States Senator Tom Harkin spoke eloquently during the groundbreaking ceremony about the tremendous debt of thanks that he owed to the Religious Sisters of Mercy for the charity care they provided to his elderly father and his older brother, Frank, throughout their lifetimes.

Harkin, a native of Cumming, Iowa, where numerous coal mines were active in the first half of the 20th century, watched each winter as his father—who had only a sixth grade education—developed pneumonia from what would later be determined as black lung disease, attributed to years of work in the mines.

These episodes would lead to his father's delivery to the emergency room by a relative owning a vehicle and a request for treatment. After a few days or weeks in the hospital, the Sisters would send him home without a bill.

Later, Tom's older brother, Frank, would experience the care of Mercy staff as he suffered with heart disease. Frank, who was deaf from birth, was part of the reason Harkin authored the Americans with Disabilities Act of 1990 to improve the treatment of persons with disabilities in our country. Frank, who died in 2000, was also a resident of the Bishop Drumm Retirement Center in Johnston, Iowa at the time of his death.

Harkin in recounting these experiences indicated that when Dr. Deanne Remer approached him in the summer of 2001 to seek his help in obtaining \$4.5 million for the construction of a new nursing and allied health academic building, he was thrilled. "The light went on, and I knew I wanted to repay in some way the generosity of the Sisters of Mercy for what they had done for my family over so many years," he said.

As the ranking member on the Labor, Health and Human Services and Education Sub-committee of the Senate Appropriations Committee, he included earmarks for the project three times. As he indicated to College officials, a request of this size (\$4.5 million) would take some time, and so the project was written into the 2002, 2003 and 2004 appropriations bills. All together, Mercy College received federal funding of \$4,428,364 thanks to the efforts of Senator Harkin.

SCHOLARSHIP ANNOUNCED

In honor of Harkin's efforts on behalf of the Sullivan Center and in thanksgiving for his efforts to improve the lives of those who live with disabilities and his desire to help students enter health care professions, Mercy College announced the creation of the Frank Harkin Memorial Scholarship during the groundbreaking ceremony.

Two renewable \$2,500 scholarships will be awarded to students who have a personal history of involvement with persons with disabilities and are admitted to any of our associate degree programs. Recipients will be rewarded for their personal examples of involvement with persons with disabilities and encouraged to foster the development of persons with disabilities throughout their health care careers.

The new Frank Harkin Memorial Scholarship will be first available in the spring 2005 round, for use in academic year 2005-06.



U.S. SENATOR TOM HARKIN GREETS STACY LAWSON, NUCLEAR MEDICINE PROGRAM COORDINATOR, WHILE ASSISTANT NURSING PROFESSIONS CAROLYN KERN AND SUSAN PAIR LOOK ON.



SENATOR HARKIN ADDRESSES A CROWD ESTIMATED AT NEARLY 250 PEOPLE, INCLUDING SISTERS OF MERCY AND THREE LOCAL TELEVISION STATIONS.



SENATOR TOM HARKIN READS THE PROCLAMATION PRESENTED BY PROVOST JOHN NIES, PH.D., ANNOUNCING THE CREATION OF THE FRANK HARKIN MEMORIAL SCHOLARSHIP IN HONOR OF HIS OLDER BROTHER WHO INSPIRED THE SENATOR TO AUTHOR THE AMERICANS WITH DISABILITIES ACT.

SULLIVAN CENTER CONSTRUCTION SITE OF HISTORICAL SIGNIFICANCE TO DES MOINES

Mercy College officials discovered while completing a federally required historical review in advance of obtaining final approval for construction that the site of the Patricia Clare Sullivan Center is located immediately adjacent to the site of Des Moines' first high school—the Fourth Ward School.

The other schools in town were becoming overcrowded—Des Moines' population at that time was 5,650—when a petition drive by 21 citizens resulted in the 1863 construction of a new school. It was built at the corner of Sixth and School streets, which was then the city's west side, and originally housed a grammar school for eight grades in addition to the high school. It was also the second school in the nation to provide a kindergarten class.

Originally called the Fourth Ward School, it was renamed Crocker School after the Civil War for war hero Gen. Marcellus Crocker, a law partner of Jefferson Polk. Crocker had been cited for “conspicuous

gallantry” in the peach orchard at the battle of Shiloh in 1863.

The curriculum of that first high school included such courses as “Reading,” “Definitions,” “Penmanship,” “Declamations,” “Rhetoric,” “Commercial law” and “Greek.” The creation of the curriculum had taken more than two years to complete “because of the presence of rebel raiders” in the state. The first graduating class consisted of one boy and three girls.

The school was rebuilt after burning in 1875, and by the 1920s it served as many as 650 pupils representing 23 nationalities. The photo below shows the building after 1875.

Historical research indicated that the school fell victim to progress in 1962, when firefighters burned it to make way for the new MacVicar Freeway (Interstate 235). The old landmark was preserved in an educational firefighting film produced by Iowa State University to teach firefighters how to use large fire lines to control major fires. +



CROCKER SCHOOL, CIRCA 1920s—DES MOINES' FIRST HIGH SCHOOL.

ALUMNI PROGRAMMING

DEBRA CASON-McNEELEY DISCUSSES DEMENTIA FOR CEU PROGRAM

The Mercy College Nursing Alumni Association and the Mercy College Nursing Honor Society co-sponsored a CEU training program for nurses on Friday, October 15, 2004.

Debra Cason-McNeeley, MSN, RNCS, presented a 3-hour session entitled, “Differentiating Delirium, Depression and Dementia.” Debra is a certified clinical nurse specialist in adult psychiatric and mental health nursing who has been actively involved in the profession of nursing for over 33 years. Her experience includes critical care nursing and adult/adolescent psychiatric nursing with a focus in geriatric nursing. Debra is currently a professor of mental health nursing at Grand View College. She lectures nationally on dementia, Alzheimer's disease,



MORE THAN 60 REGISTRANTS INCLUDING ALUMNI, STUDENTS AND GUESTS ATTENDED THE NURSING ALUMNI ASSOCIATION-SPONSORED CEU PRESENTATION THAT WAS HELD AT THE MERCY EDUCATION CENTER ON OCTOBER 15, 2004.

end of life issues and other topics related to geriatric psychiatry and the elderly.

The training was held on the upper level of the Mercy Education Center, which is located directly north of Mercy Medical Center—Des Moines.

The purpose of the program was to familiarize nurses with the diverse clinical presentations/symptoms in the elderly population of delirium, depression and dementia in order to initiate appropriate intervention for the alleviation of suffering. +

DISTINGUISHED ALUMI/ CONTINUED

nurse and nursing instructor at Washington University Hospital in Saint Louis, and a nursing instructor at Saint Mary's Hospital School of Nursing in Tucson, Arizona. In 1968 Anne received her Master in Social Work degree from the University of Hawaii in Honolulu, Hawaii, and began her career in mental health nursing. She worked at the Southern Arizona Mental Health Center in Tucson from 1968-1990 as a psychiatric nurse and social worker. Her social work responsibilities included casework, case management, coun-

selling, individual and group psychotherapy, program planning, consultation, supervision, and staff training. As a team leader from 1979-1990, Anne supervised a team consisting of psychiatric social workers, psychiatric nurses and clinical psychologists and conducted case presentation and group supervision meetings each week. From 1969-1986 Anne also was a field instructor of graduate students in social work at Arizona State University and in 1982 received the Outstanding field instructor Award.

Anne has been listed in *Who's Who in American Women* each year from 1979-1986, was listed as an Outstanding Professional in Human Services by the American Academy of Human Services, and has also been listed in *Who's Who in the West*. She was a member of the National Association of Social Workers from 1968 until her retirement in 1990, a board member of this association from 1971-1974, and a founding member and an honorary life member of the COPE Behavioral Health Services Board of Directors. +

ALUMNI ASSOCIATION CALENDAR OF ACTIVITIES FOR 2004-05

Specific information on each event will be mailed out approximately 30 days in advance.

December 2, 2004
Nursing Holiday Luncheon
Yunker's Tea Room

December 8, 2004
Theatre Event
Civic Center — *The Producers*

January 25, 2005
Off-Campus Alumni Event
Scottsdale, AZ

January 26, 2005
Off-Campus Alumni Event
Laguna Cliffs, CA

January 27, 2005
Off-Campus Alumni Event
San Francisco, CA

February 8, 2005
Off-Campus Alumni Event
Houston, TX

February 9, 2005
Off-Campus Alumni Event
Dallas, TX

February 15, 2005
Off-Campus Alumni Event
To Be Determined, FL

April 19, 2005
Off-Campus Alumni Event
Denver, CO

May, 2005
Alumni Scholarship
Selection Meeting
Mercy College

May 13, 2005
Golden Years Banquet
To Be Determined

June 4, 2005
Annual Nursing Alumni Banquet
Holiday Inn-Airport

June 9, 2005
Off-Campus Alumni Event
Washington, D.C.

NEWS AND NOTES

BIRTHS

KIM LATHRUM '88 and her husband Mick, a son, Zane Austin, on August 29, 2004.

KELLIE HOCKMUTH '95 and her husband Dr. David Hockmuth, a daughter, Madelyn Elizabeth, on July 29, 2004.

DAWN JURGENS '95 and her husband Steve, twin sons, Nicholas Richard and Samuel Ray, on June 4, 2004.

MARLENE WINKLER '95 and her husband Jay, a daughter, Kylie Lahn, on April 8, 2004.

HEATHER TAMS '96 and her husband Travis, a son, Colby Ryan, on July 3, 2004.

MISTIE SCHAN '98 and her husband Toby, a daughter, Camryn Bfee, on Sept. 8, 2004.

AMY HUGHES '99 and her husband Eric, a son, Matthew Eric, on June 11, 2004.

MELISSA MEILS '00 and Tony Pelham, a son, Maxwell Graham, on May 18, 2004.

STACEY KASPERBAUER '01 and her husband Troy, a daughter, Molly Catherine, on March 7, 2004.

DANA LUKAWSKI '02 and her husband Guy, a son, Logan Robert, on August 9, 2004.

NURSING

CLASS OF 1979

(Celebrated their 25-year class reunion at the Nursing Alumni Association Banquet in June.)

CAROL BISHOP ARMSTRONG lives in Shakopee, MN with her husband Harold and their three children. She is a nurse paraprofessional at Jordan Lifeskills Class for the Minnesota River Valley Special Ed Coop in Jordan, MN.

HELEN THILGES BASS is a staff RN in the OB Department at Alegent Health-Mercy Hospital in Council Bluffs, IA. She lives in Council Bluffs with her husband Kenny. They have five children and one grandchild.

CYNTHIA DOWNES BOTTS and her husband Mitch live in Lee's Summit, MO with their four children. Cynthia is semi-retired after moving from Iowa City to Lee's Summit a few years ago. She was employed for 20 years at Mercy Hospital in Iowa City.

KRIS KOFMEHL FLATER is the Clinical Coordinator for the Iowa Kidney Stone and Laser Eye Center of Mercy Medical Center-

Des Moines. She and her husband Jerry have 17-years-old twins.

DEBRA WENTWORTH GOSS lives in Des Moines with her husband Dan and two children. Debra is the director of health services at Wesley Retirement Services in Johnston, IA.

SANDY WRIGHT HALL and her husband Mike live in West Des Moines, IA and have three children. Sandy is an RN patient care manager at Mercy Medical Center-Des Moines.

REBECCA ANDERSON JONES is a nurse at Friendship Haven in Fort Dodge, IA, where she lives with her husband Terry. They have two sons and a daughter who died at birth.

PEGGY LINTHICUM lives in Colorado Springs, CO and is the charge nurse in surgery for Centura Health-Penrose St. Francis in Colorado Springs.

SYMPATHY

Your prayers are requested for the family and friends of these graduates who have died recently.

CLARA ENGLE BROWN—
Class of 1953

ROBERTA KAY BROCKWAY
COPELAND— Class of 1991

CLARE GLEASON FINLEY—
Class of 1945

ROSE MARIE WELSH HADAWAY—
Class of 1946

LORETTA MOORE PALCIC—
Class of 1944

WANDA NELSON SCHROEDER—
Class of 1946

MERCY COLLEGE'S FIRST PROVOST BEGINS WORK

The College is pleased to announce the addition of DR. JOHN NIES, the first provost of Mercy College. Dr. Nies holds a bachelor of arts degree from Hastings College in Hastings, Nebraska and a master of arts degree and a Ph.D. from the University of Nebraska-Lincoln. He previously was the associate vice president for research and development for Noel-Levitz Center for Enrollment

Management in Littleton, Colorado and was the vice president for Academic Affairs and dean of Illinois College in Jacksonville, Illinois from 1985-1995.

In addition, the following individuals are new employees of Mercy College:

SCOTT WEILER—Systems Analyst
WAYNE DILLE—Financial Aid Coordinator

DR. GLENN OREN—LAS, Chemistry/
Physics/Math Assistant Professor
KELLY KLINE—RT Clinical Instructor

DR. JOE MORAVEC—LAS, Caring and Diversity, Assistant Professor
ROSE WOODY—DMS Adjunct

Instructor
CATHY PAGEL—Nursing Assistant Professor

JANE FLAMMANG—DMS Clinical Instructor

The Division of Liberal Arts and Sciences is pleased to announce that Dr. Mark Stevens has been promoted to assistant professor, and the Division of Nursing is pleased to announce that Theresa Smith '87 has been promoted to instructor. +

NEWS AND NOTES/ CONTINUED

JOYCE MARTINEZ and her husband Albert live in Des Moines and have three children. Joyce is a nurse in the Perinatal Diagnostic Center at Mercy Medical Center-Des Moines.

SUE KENNEDY MCCOLLOM is a nurse at Behavioral Services (outpatient, intensive outpatient and partial hospital program) for Mercy Medical Center-North Iowa in Mason City, IA. Sue and her husband Randy have three children.

JOELLEN BUNN MCCOY and her husband Mick have been traveling nurses for the last four years. They have three children and four granddaughters.

ANNE MILLER lives in Adel, IA with her husband Mark and their two children. Anne is a staff nurse for Mercy Ambulatory Surgery at Mercy Medical Center-Des Moines.

MADONNA NICHOLS and her husband Jeff live in Ankeny, IA and have one son.

WILLOW WILLIAMS PATTERSON is the unit nursing manager on West Three Recovery for Mercy Medical Center-Des Moines. She and her husband Steven have two children.

JONI FRETTIM PURCELL and her husband Tom live in West Des Moines and have six children. Joni is a staff nurse in the OR at Iowa Methodist Medical Center in Des Moines.

DOUG REED is an RN in surgery at Iowa Lutheran Hospital in Des Moines. He and his wife Judy have three children.

DEBRA SHRIVER lives in Fort Dodge, IA with her husband Brian and their three children. Debra is a CNE at Trinity Regional Medical Center in Fort Dodge.

JULIE BENTON SPORRER and her significant other, Richard "Dick" Fritz, live in Chandler, AZ. Julie is the hospice case manager for Banner Hospice in Gilbert, AZ. Julie has two children.

TINA MITCHAM TUBB and her husband Robert live in Phoenix, AZ and have three children. Tina is the practice manager for Obstetrix Medical Group of Phoenix.

DEB WILLYARD is a CHF case manager at Mercy Medical Center-Des Moines. She and her husband Doug live in West Des Moines, IA and have three children.

MARY LOU WITT lives in Macksburg, IA with her husband Robert. They have three children. Mary Lou is an RN at Younker 8 for Iowa Methodist Hospital in Des Moines. +

JOB OPENINGS

DIVISION OF NURSING

>> ASN/BSN Program Chair,
Full-time, Monday-Friday

>> Coordinator Nursing Arts Lab,
Full-time, Monday-Friday

STUDENT SERVICES

>> Secretary, Full-time,
Monday-Friday

INSTITUTIONAL ADVANCEMENT

>> Marketing Manager, Full-time,
Monday-Friday

For more information regarding the Division of Nursing job openings, please contact Shirley Beaver at (515) 643-6615. You may also contact the Human Resources Department at Mercy Medical Center-Des Moines at (515) 643-3100 or view all job openings at Mercy College or the Medical Center at www.mercydesmoines.org.

ALUMNI PROFILE

MARGARET HURLEY '29 REMEMBERS THE EARLY YEARS

As Mercy College embarks upon a \$5.8 million building expansion to accommodate swelling enrollment numbers, Margaret Phelan Hurley can still recall the early years when nursing school was far different.

When Margaret entered the Mercy School of Nursing in 1927, there was no separate building to house the nursing college—all of the training and classroom instruction was done on site at the hospital. The three-year curriculum was taught not by professors, but by doctors and the Sisters of Mercy, and only eight other women were in her class. What's more, there were no dormitories, daily commutes or parking issues—all of the students lived in small rooms in the hospital's east wing.

According to College archives, students in Margaret's era at Mercy spent the first four months of nurses training in a "pre-clinical period" which included primarily classroom and laboratory work. After two months, students spent two hours each day in the ward with patients. At the end of the pre-clinical period, students were awarded a white nurse's cap. The last 32 months of their three-year training was spent in the classroom



and acquiring clinical experience on various floors of the hospital.

Student nurses in the 1920s were the primary labor force at the hospital, working long shifts with little time off. In addition to patient care, they prepared food trays, rolled bandages, cut surgery sponges by hand and provided janitorial services. It was an educational experience that in today's world seems more like boot camp than formal medical training, but it was an experience that 98-year-old Margaret—the College's oldest known living graduate—remembers fondly.

"We did a lot of hands-on training during school back then," she recalls. "Nurses did everything for the patients. When they left the

hospital, we had to clean the rooms and get them ready for the next patient. And in school, we worked for \$5 a month. One time I took the \$5 and bought a whole suit for it. People don't believe that stuff but that's what really happened."

It wasn't all work and no play for Margaret and her classmates, however. "We used to put a

pillow in our bed to fool the sisters into thinking we were asleep," she says. "When we were late getting in at night, the sisters were always going to send us back to the farm!"

Margaret Phelan was born in 1907 in Villaria, Iowa. The eighth in a family of 11 boys and three girls, she is the sister of the late Fr. Charles Phelan and Sister Mary Patrice Phelan, who served as an administrator at Mercy Hospital in the 1940s. Margaret grew up on a farm, and rode to school each day in a school bus fueled by a team of horses and driven by a woman. There was only one other person in her ele-

mentary school graduating class. She graduated from Farrar High School in 1924, and entered Mercy School of Nursing. In 1927, she earned her diploma and continued working at Mercy Hospital. She left the nursing profession in the 1930s to return home to care for her parents. Following her mother's death, she met and married William Hurley in 1950. The couple moved to the Hurley farm outside of Granger. They

never had children of their own, but enjoyed a large extended family. When Bill died in 1974, Margaret moved into a house in Granger where she lived until 1999—the year she relocated to her current residence at Martina Place in Johnston, which is located on the grounds of the Bishop Drumm Care Center. Margaret was an active member of the American Legion for over 50 years. +

ALUMNI EVENTS

GOLDEN YEARS BANQUET INCLUDES STUDENT SINGERS FROM HOLY FAMILY SCHOOL



THE NURSING ALUMNI ASSOCIATION SPONSORED THE 4TH ANNUAL GOLDEN YEARS BANQUET IN MAY. SHOWN ABOVE ARE SOME OF THE INDIVIDUALS WHO ATTENDED THE GOLDEN YEARS BANQUET, ALONG WITH MEMBERS OF THE 1ST GRADE AT HOLY FAMILY SCHOOL IN DES MOINES. THE CHILDREN SANG SEVERAL SONGS FOR THEIR APPRECIATIVE AUDIENCE AND EVERYONE HAD A WONDERFUL TIME. SAVE THE DATE FOR THE NEXT GOLDEN YEARS BANQUET—FRIDAY, MAY 13, 2005.

KATHY ALLER, CLASS OF 1970, WAS RECRUITED BY ONE OF THE CHILDREN FROM HOLY FAMILY SCHOOL TO HELP HER WITH ONE OF THE SONGS.

BACCALAUREATE HIGHLIGHT—HAND BLESSING

STUDENTS AT THE SPRING 2004 BACCALAUREATE PROGRAM WERE INVITED TO COME FORWARD TO HAVE THEIR HANDS BLESSED BY FR. GREG LEACH, WHO OFFICIATED AT THE ECUMENICAL SERVICE. THERESA LEITING, A GRADUATE OF THE ASSOCIATE OF SCIENCE IN NURSING PROGRAM, IS SHOWN HERE RECEIVING THE BLESSING.



IN THIS ISSUE



3 MISSION ACCOMPLISHED



18 ALUMNI PROFILE



SULLIVAN CENTER PART OF STRATEGIC PLAN GOAL # 5

10

VOLUME 5, ISSUE 1

PUBLISHER: DR. DEANNE M. REMER

EDITOR: BRIAN TINGLEFF

WRITERS: MARY JANKOWSKI,
BRIAN TINGLEFF, LISA BAKER,
SANDI TUTTLE

DESIGN: MAUCK+ASSOCIATES

E-MAIL: FOUNDATION@MCHS.EDU

INTERNET: WWW.MCHS.EDU

VitalSigns is published three times a year (October, January, May) by the Office of Institutional Advancement, Mercy College of Health Sciences. Send address changes to Institutional Advancement, Mercy College of Health Sciences, 928 6th Avenue, Des Moines, Iowa 50309-1239. Copyright 2004 by the Office of Institutional Advancement, Brian Tingleff, vice president.

Mercy College of Health Sciences does not discriminate on the basis of race, color, creed, religion, sex, age, national origin or disability.



A partner with Mercy Medical Center – Des Moines

928 6TH AVE. DES MOINES, IOWA 50309-1239

ADDRESS SERVICE REQUESTED

PRSR STD
U.S. POSTAGE
PAID
Permit 3283
Des Moines, Iowa